



★ INTRODUCTION:

The garage door is usually “the” most used door in a home. The choice of a reliable and safe garage door opener is paramount. In fact, not more than twenty years ago, the garage door opener was considered a luxury. A lot has changed in twenty years, and now most people consider them to be a security necessity.

SUPER DRIVE® 800N is designed specifically to lift even the heaviest custom made wooden garage doors. The **SD-800N** chain drive garage door openers are rugged, reliable and deliver all-around lasting performance.

SUPER DRIVE® prides itself on the quietness of its **SD-800N** garage door openers.

Smooth quiet operation with minimal transmitted vibration, making it a peaceful living condition for your family and neighbours. The **SUPER DRIVE®** is ideal for homes, with living rooms close to the garage.

The opener ensures a flexible soft start and soft stop during the end of the travel cycle, resulting in a reduction of speed and noise. Automatic obstacle detection function. A properly installed and adjusted **SUPER DRIVE®** opener will stop automatically if obstructed during the up and down process. If the door is closing, it will stop and return to the open position. If the door is opening, it will simply stop. Electronic limits, which are accurate, reliable and convenient to adjust. The limits memory will be stored although the power is off.

For added security, rolling code technology prevents “code stealing”. This means that a brand new security code is generated every time the opener is used, keeping your family, home and belongings safe and secure. The **SUPER DRIVE® 800N** will give you the peace of mind and durability you have been waiting for.



IMPORTANT SAFETY WARNINGS KEEPING YOU SAFE!

IMPORTANT SAFETY WARNINGS

Please consider that by automating your garage door you have created the largest moving electrical appliance in your home.

1. Check for any obstructions before operating your door.
2. Do not operate the door without clear sight of it.
3. Keep children and animals at a distance when you are operating the **SUPER DRIVE® 800N** garage door opener. Do not let children play with the appliance or its controls.

They could catch hold of the rotating roller wheels inside the tracks of your sectional garage door or put their fingers or hand in between the moving panels and injure themselves.

4. Always make sure that you ask for a **SUPER DOORS®** garage door with its pinch prevention patented panels with its **FINGER SHIELD®** innovation design that will protect you and your family from serious finger or hand injuries.



IMPORTANT INFORMATION TAKE NOTE!

IMPORTANT INFORMATION

- ★ The **SUPER DRIVE® 800N** garage door opener may Only be installed by a Qualified installer.
- ★ Do Not disassemble or repair the product by yourself.
- ★ Contact the authorized service technician of this unit in the case of a malfunction, repair or maintenance.
- ★ Do Not disassemble the batteries. Do Not dispose off batteries in a fire.



MAINTENANCE PREVENT REPAIRS!

MAINTENANCE

IMPORTANT: A poorly operating door can affect the life of the automatic opener due to incorrect loads and will void the warranty.

Have your service technician at lease twice a year examine the door and operator for wear, damage and improper balance and conduct a 10-step inspection at least yearly.

1. Lubrication and adjustment of rollers and hinges.
2. Lubrication of torsion springs as well as the end and centre bearing plates.
3. Lubrication of all side and bottom weather seals.
4. Adjustment and balancing of torsion or extension (tension) springs.
5. Adjustment of set screws, drums, springs as well as centre coupling and their anchor plates.
6. Adjustment of lifting cable tension.
7. Adjustment of vertical and horizontal tracks (alignment and wall attachments).
8. Adjustment and lubrication of the door opener's, electrical and mechanical components.
9. Adjustment of all security obstacle detection systems (mechanical or electrical).
10. Verification of proper operating condition of all electronic door opener accessories, if applicable.



★ LIST OF PARTS:

★ A - MOTOR UNIT:

- ① - Motor head x 1
- ② - Remote controls x 2
- ③ - Wall mounting bracket for remote control x 1
- ④ - Wall plugs x 2 (6mm x 25mm)
Self-taper screw x 2 (4mm x 22mm)

★ B - DRAW BAR

- ⑤ - 1 Piece draw bar x 1 (2.3 / 3.3 or 3.6m)
- ⑥ - Straight arm – (Attached to carriage)
- ⑦ - Clutch x 1
- ⑧ - Release cord x 1
- ⑨ - Self-taper screw x 3 (4mm x 20mm)

★ C - BATTERY BACK-UP

- ⑩ - Battery box
- ⑪ - Battery box lid
- ⑫ - Battery box screws x 4 (3mm x 4mm)
- ⑬ - Battery's x 2
- ⑭ - Battery cable

★ D - DRAW BAR CLAMPS

- ⑮ - Clamp brackets – (With hole)
- ⑯ - Clamp brackets – (With out hole)
- ⑰ - Bolts x 4 (6mm x 12mm)

★ E - DOOR MOUNTING BRACKET

- ⑱ - Door bracket
- ⑲ - Locking pin
- ⑳ - Spring locking clip

★ F - WALL MOUNT

- ㉑ - Wall mount bracket
- ㉒ - Locking pin
- ㉓ - Spring locking clip
- ㉔ - Wall plugs x 2 (10mm x 50mm)
- ㉕ - Coach screws x 2 (8mm x 60mm)

★ G - DOOR ARMS

- ㉖ - J-Arm – (Inside motor box at bottom)
- ㉗ - Bolts x 2 (8mm x 20mm)
- ㉘ - Nuts x 2 (8mm)

★ F - MOUNTING ACCESSORIES

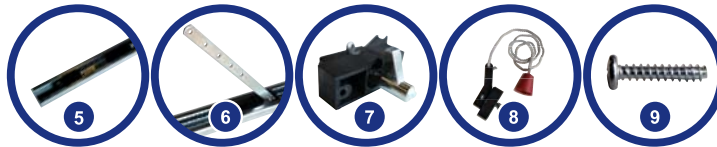
- ㉙ - Stabilizer bracket - Draw bar
- ㉚ - Hanging bracket - Front of Motor
- ㉛ - Hanging bracket - Rear of Motor
- ㉜ - Punched angle
- ㉝ - Bolts x 2 (8mm x 20mm)
- ㉞ - Nuts x 2 (8mm)

★ PARTS GUIDE:

★ A - MOTOR UNIT



★ B - DRAW BAR



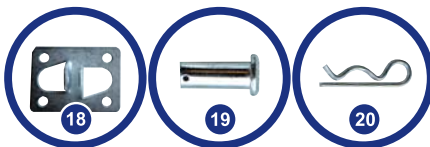
★ C - BATTERY BACKUP



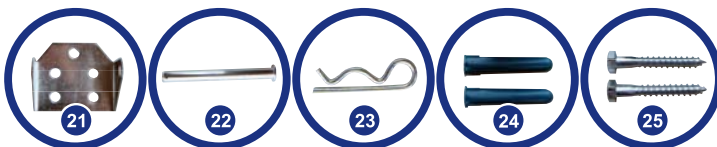
★ D - DRAW BAR CLAMPS



★ E - DOOR MOUNTING BRACKET



★ F - WALL MOUNT



★ G - DOOR ARMS



★ H - MOUNTING ACCESSORIES



★ H - MOUNTING ACCESSORIES

To ensure a quick and easy installation, 4x different mounting brackets are provided to overcome difficult installations.



COURTESY LIGHT:

When the **SUPER DRIVE® 800N** is operated, the courtesy light will be turned on when the door is triggered to open or close. The light will switch off automatically approximately 3 minutes after the last operation.



POWER FAILURE:

In case of a power failure, the **SUPER DRIVE® 800N** will draw its power from the batteries. The amount of times you can run the door when the power has failed will depend on the door running load and time. The courtesy light will be an indicator if there is a power failure, by not turning on when the door is triggered to open or close.

MANUAL DISENGAGEMENT & RE-ENGAGEMENT:

The **SUPER DRIVE® 800N** operator may be disengaged so that the garage door may be operated manually. To do this, simultaneously pull on the emergency release cord with one hand and start moving the door with the other. Release the cord and the lever attached to the cord will spring back and you can continue moving the door manually.



Use caution when operating the manual disengagement with the door open since it may fall rapidly.

To re-engage the door simply run the opener in automatic mode or move the door gently by hand until you feel and hear it click back on the drive system.



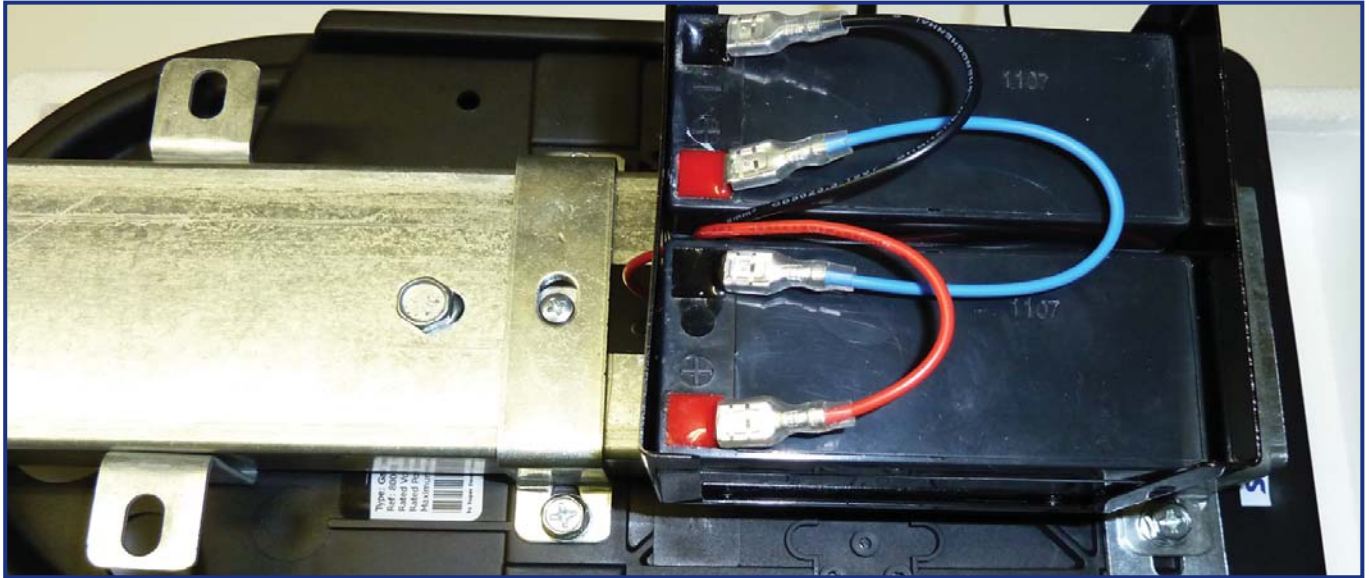


BATTERY BACKUP:

The correct wiring installation prevents the short-circuiting of the PC board and the operation of the battery backup system. After extended power failures minimize use of the unit for the duration of the recharge time. Extended power failures will be detrimental to the lifespan of the batteries.



Allow at least "8" Hours charge time after the installation of new batteries in the unit



REMOTE CONTROLS:

A single push and release of the designated button on either the wall console or remote control will cause the garage door to open or close and stop automatically once the open or closed position is reached. The door may be stopped by pushing the transmitter button again (wait one-second between pushes). A further push of the button will cause the door to then travel in the opposite direction.

Additional remotes (maximum 10 can be learned into the on-board receiver).



★ PROGRAMMING OF MOTOR UNIT:

OPEN LIMIT PROGRAMMING:

1. Press "P" and hold (± 5 sec) until LED 2 flashes.
2. Press and hold "+". The rotation indicator will rotate anti-clock wise indicating opening of door.
Keep holding "+" until the desired opening position is reached.
3. By pressing "+" or "-" fine tuning can be done.
4. Press "P" to store the open location. LED 4 will now flash.



CLOSE LIMIT PROGRAMMING:

1. While LED 4 is flashing:
2. Press and hold "-". The rotation indicator will rotate anti-clockwise indicating closing of door.
Keep holding "-" until the desired closing position is reached.
3. By pressing "+" or "-" fine tuning can be done.
4. By pressing "P" once, the close position will be stored and the controller will immediately go into a "Self Test" mode, opening and closing the door automatically. During this cycle the controller will test the torque and force needed to operate the door within safe limits. Once the cycle is completed LED 3 will be on. LED 3 = Standby Mode.



SETTING OPEN FORCE & TORQUE MANUALLY (not recommended)

If the force needs to be increased or decreased after initial automatic calculation, the force should be adjusted by one (1) increment at a time. The force should be set as low as possible, just enough to allow your door to travel up freely without stopping during its travel.

1. Press "P" and hold (± 5 sec) until LED 2 flashes.
2. Press "P" 2 x times until LED 6 flashes.
3. By pressing "+" you will increase the opening force
4. By pressing "-" you will increase the opening force
5. The force is at its highest when all 8 LED's are on or at its lowest when only LED 1 is illuminated.
6. Press "P" 2 x times to exit.



SETTING CLOSE FORCE & TORQUE MANUALLY (not recommended)

1. Press "P" and hold (± 5 sec) until LED 2 flashes.
2. Press "P" 3 x times until LED 1 flashes.
3. By pressing "+" you will increase the closing force.
4. By pressing "-" you will decrease the closing force.
5. The force is at its highest when all 8 LED's are on or at its lowest when only LED 1 is illuminated.
6. Press "P" 1 x times to exit.



PROGRAMMING REMOTE CONTROL CODES

1. Learn remote press "P" and "+" and hold at the same time until LED 7 flashes.
2. Press "+" again until LED 7 remains on.
3. Press the desired remote button twice, LED 7 will flash. Press "+" for additional remotes.
4. Press "P" to save the code and exit.



ERASING OF REMOTE CONTROL CODES

1. Press "P" and "+" and hold at the same time until LED 7 flashes.
2. Press and hold "-" LED 7 will go off - Keep holding "-" until 7 comes on again.
3. All codes are now erased.
4. Press "P" to exit.





1 YEAR MANUFACTURER'S WARRANTY

- ★ All goods manufactured by **SUPER DOORS®** carry a 12 month factory warranty from date of invoice.
- ★ All goods are warranted to be free from faulty components and manufacturing defects.
- ★ Faulty goods will be repaired or replaced at the sole discretion of **SUPER DOORS®** free of charge. In the event of the goods being supplied by dealer, merchant, agent or duly appointed installers of **SUPER DOORS®** Products, the claim must be directed to that supplier.
- ★ The carriage of goods is for the customer's account.
- ★ All warranty claims must be accompanied by the original invoice, completed warranty slip and matching SERIAL NUMBER.
- ★ The warranty does not cover non-defect damage caused by unreasonable use or labour charges for removal or re-installation of a repaired or replaced unit.
- ★ This warranty excludes lightening damage, insect damage, water damage and damage caused by faulty installation.
- ★ The warrantor shall not be liable for consequential or incidental damage to the property or person.

THE FOLLOWING CONDITIONS WILL DISQUALIFY THIS PRODUCT FROM THE WARRANTY AS LAID OUT ABOVE.

THESE CONDITIONS ARE NON-NEGOTIABLE.

- ★ Any single **SUPER DRIVE®** garage door operator used to automate more than one door at one time.
- ★ Any **SUPER DRIVE®** garage door operator used outdoors, including carports.
- ★ Any **SUPER DRIVE®** garage door operator used in excessive traffic applications for example an apartment-block parking garage.
- ★ When any **SUPER DRIVE®** garage door operator are not installed by a QUALIFIED installer.
- ★ Any unauthorised non-manufacturer modifications to the product or components thereof.

1 YEAR MANUFACTURER'S WARRANTY SLIP

Client Name:.....

Dealer Name:.....

Installer Name:.....

Model Number:.....

Serial Number:.....

Signed:..... Date:...../...../.....

